

## Centralized Management System

- Supports TR-069 Vigor series routers
- Unlimited Network level to group CPEs
- Remote Auto Provisioning and Status Monitoring
- Dynamic and Schedulable Service Provisioning
- VPN Wizard for easy configuration
- Daily Report and Performance for Review
- System Log System
- Real Time Alarm Management
- Topology Management
- Advance Firmware Management
- Security and User Group Management

VigorACS SI, a powerful centralized management system, let System Integrators manage DrayTek's devices more convenient. TR069-based VigorACS SI with user-friendly interface can help users to maintain the configuration of devices easily. As a "value-added" service provider, the System Integrator can assist user to set up VPN connections, VoIP services and cost down customer maintenance fee by approaching real time message from VigorACS SI.

In addition, the easy-to-understand logic management also can easily let new IT staff on board for analyzing/serving customers. VigorACS System Integrator version simplifies management tasks through product type and functionalities of features such as IPSec/PPTP VPN settings. Less technical background is required to fulfill the VPN environment by using the VPN Wizard than setting up the complex parameters of IPSec or PPTP.

**Note:** VigorACS SI version is only for Vigor router series compliant with TR-069.

### Auto Provision

Filename	Property	Size	LastModified	Directory
Temp	Directory	696	02/04/2010 10:09:04	.
Test_Java	Directory	240	02/04/2010 10:09:04	J/RootGroup
00507FA45530	Directory	48	02/09/2009 10:57:54	J/RootGroup
00507FA45530	Directory	592	01/24/2010 10:10:23	J/RootGroup
00507FA45530	Directory	424	01/25/2010 16:30:58	J/RootGroup
00507FA45460	Directory	592	01/24/2010 10:10:08	J/RootGroup
00507FA45468	Directory	592	01/24/2010 10:25:35	J/RootGroup
00507FA45620	Directory	624	01/14/2010 21:05:17	J/RootGroup
00507FA45678	Directory	784	02/14/2010 23:124:48	J/RootGroup
TestTest	Directory	48	09/04/2009 13:00:26	J/RootGroup
00507FC26224	Directory	528	08/22/2009 17:46:48	J/RootGroup
Test1	Directory	128	07/09/2009 10:08:55	J/RootGroup
test1_k_7331.xml	txt file	24,02056	03/02/2009 23:39:05	J/RootGroup
test2_k_322.xml	txt file	2929440	03/26/2009 22:30:17	J/RootGroup
test3_k_322.xml	txt file	144910	03/26/2009 08:07:24	J/RootGroup

Users can reduce the high cost on administrative and on-site supporting task but still provide high quality service remotely via VigorACS SI. For Multinational company's (MNC) MIS administrator, they can fulfill various operation needs, such as VPN connections, VoIP setting or uploading new applications/profiles for worldwide branches from HQ anytime when the business grows.

System administrator can trigger provision for new uploaded profile, do firmware upgrade and backup/restore configuration of certain CPE at specific time. In addition, Provision Setting can prevent changes of setting in CPE from unexpected modifying, such as Network, VPN, VoIP and Firmware version. Auto provisioning function can also execute the batch profile setting for CPEs by choosing the corresponding user group in Group Management.

### Scenarios

Auto provisioning function of VigorACS SI version can satisfy management needs of System Integrators with obtained license from Telco/ISP (figure 1) or only providing value added support (figure 2) to end-users who purchase Vigor routers. Furthermore, VigorACS SI will be capable of any management work of all CPEs spreading in worldwide branch offices from a multinational company such as Figure 3.

**Note:** CPE here defines as Vigor routers at customer's site.



Figure 1: Wholesale Provider

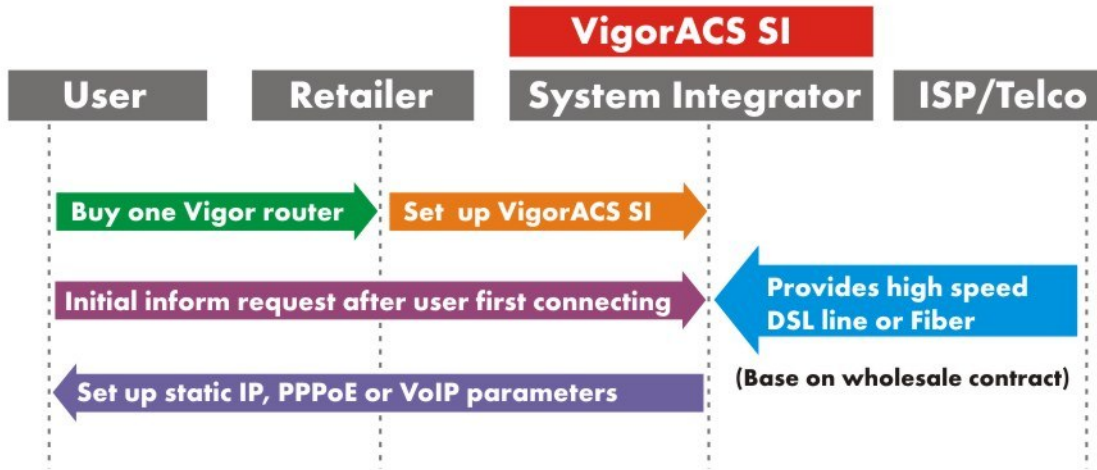


Figure 2: Value Added Support (Remote diagnostic & management)

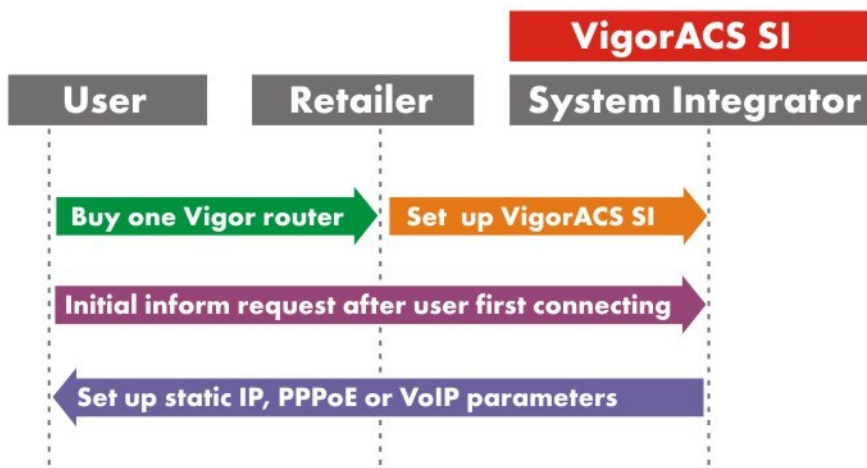
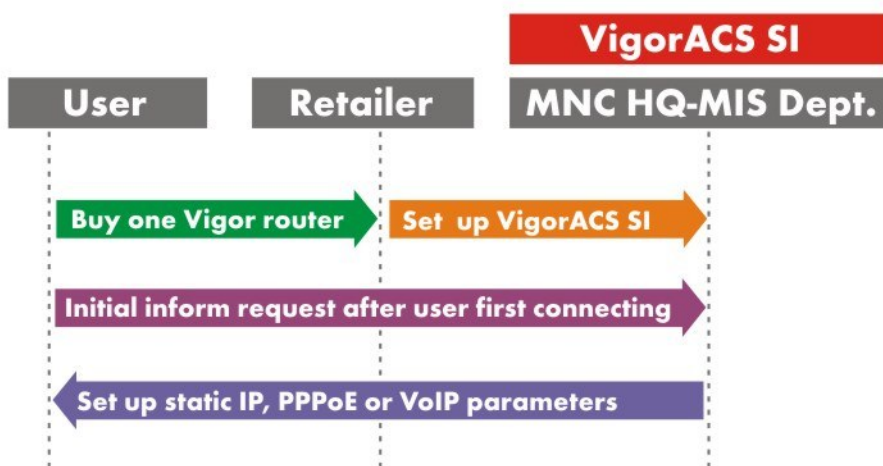


Figure 3: MNC Model (Global management)





## Device Management



### Easy-to-use wizard settings

VPN wizard embedded with advanced algorithm technique - Circular Layout lets administrators just drag specific CPEs, physically spreading in different locations together in the WUI. Then VigorACS SI would automatically place CPEs to best position for making VPN connection between each others without going through traditional troublesome setting steps. Administrators can choose different types of VPN connection including PPTP and IPSec corresponding to the different network needs of the CPE physical location.

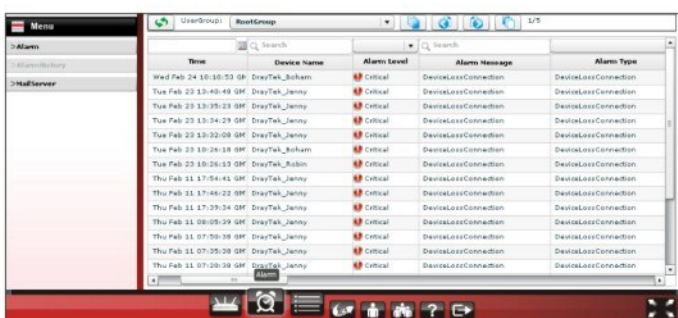
Configuration wizard provides even convenient user interface for backup and restore tasks. Administrators can flexibly set up specific date/time and occurrence timeframe for selected device(s) or group(s).

Firmware wizard is capable for scheduling firmware upgrade date/time or doing immediately.

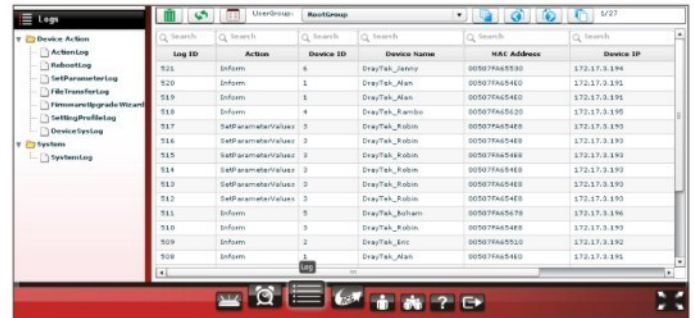
**Note:** Other wizard functions will be available in future firmware version.

In addition to wizard settings, Performance Management helps administrators to monitor device summary, detail status of individual CPE(s) and generate LAN/WAN static & graph reports, firmware reports and CPE IP overview (LAN/WAN) reports for comprehensive remote monitor & management needs. Network Topology Management allows Admin to see physical location for CPE via Google Map view with device basic information.

## Alarm & Log Management



VigorACS SI utilizes Alarm Information section to notify administrator any abnormal situation of managed CPEs for fast reacting to ensure customer satisfaction. Latest alarm will also be displayed in ACS SI homepage to catch administrator's attention for immediate reaction. The types of alarm occurrence, level of alarm, acknowledge status help supervisors evaluate each admin performance based on records displayed in Alarm Information section.



Log view section has two major portions including Device Action and System. Device Action records action, download, reboot, parameter values, object adding and deleting executed by VigorACS SI for traceability. Based on saved records, admin can know exactly what/when has been done to which CPE. System portion will record the modification or changes of the CPE(s) done by VigorACS SI, such as changing network, name of CPE or location of CPE and so on.

## User Operation Management

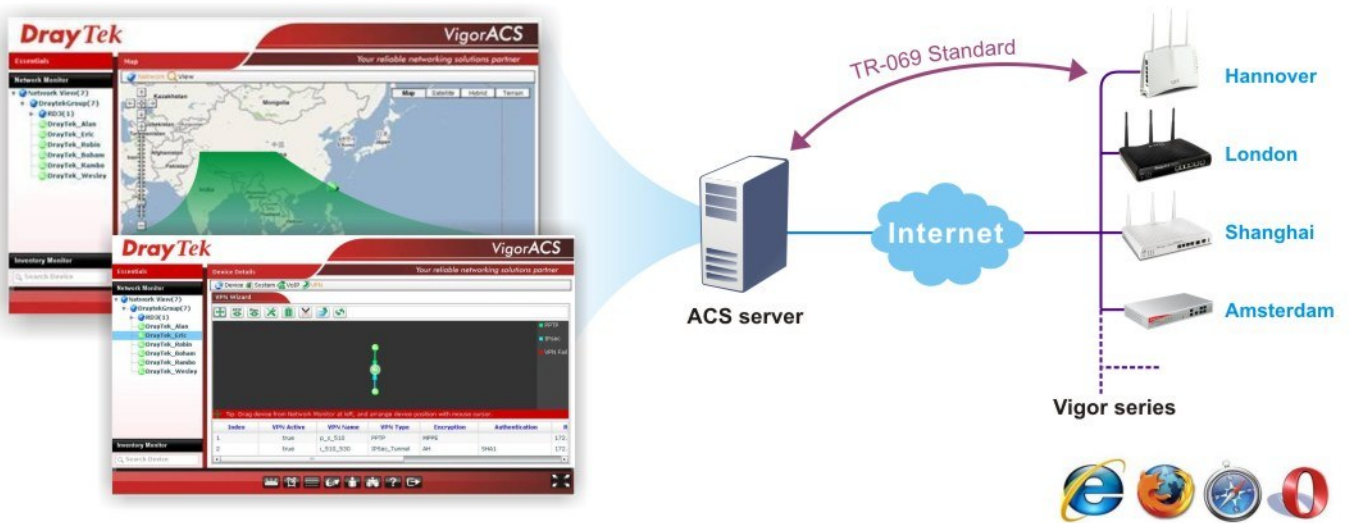


User Operation Management has three-level user authority for different administrators, including (from high to low) System Administrator, user name as root; Administrator, user name as admin; Operator, user name as Operator.

For instance, IT Dept Head or ACS SI license host can be System Administrator with highest authority, senior IT Dept engineer or ACS SI license reseller as Administrator with middle authority covering their responsible user groups and junior IT Dept engineer as Operator with lowest authority for covering only their job-related user group(s).

## System Architecture

The following figure shows an overview of the application between VigorACS and CPE devices. With TR-069 protocol, VigorACS SI can easily communicate and manage devices.

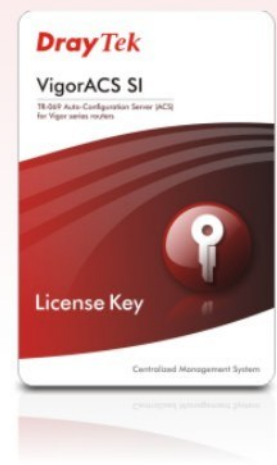


## Official Package

### What's included in the package

- Quick Start Guide
- CD Manual /Software for installation on Windows (2000/XP/Vista); Linux/Unix

- License Key



Activation on MyVigor Portal.

## System Requirement

Server	Client	Operating System
Intel® Pentium® 4 CPU 1.0 GHz or above	Adobe Flash Player 9.0	Windows 2003/XP/Vista/7
2 GB DDR2 DRAM or above	Internet Explorer/Firefox/Safari/Opera	Unix/Linux
Hard-disk space required: 80G at least		